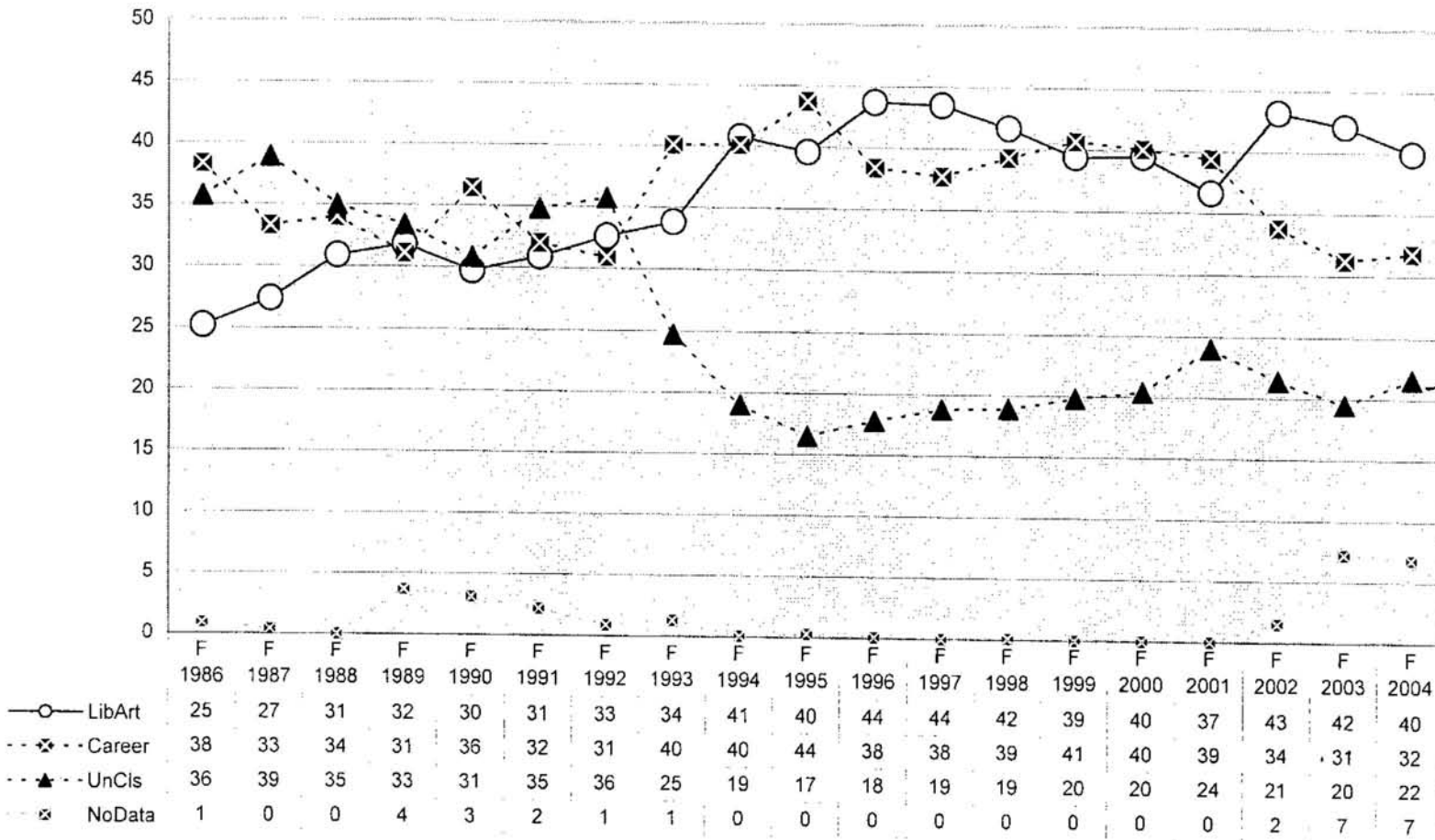


# Progression (Percent) of Liberal Arts, Career, Unclassified Students at MCC



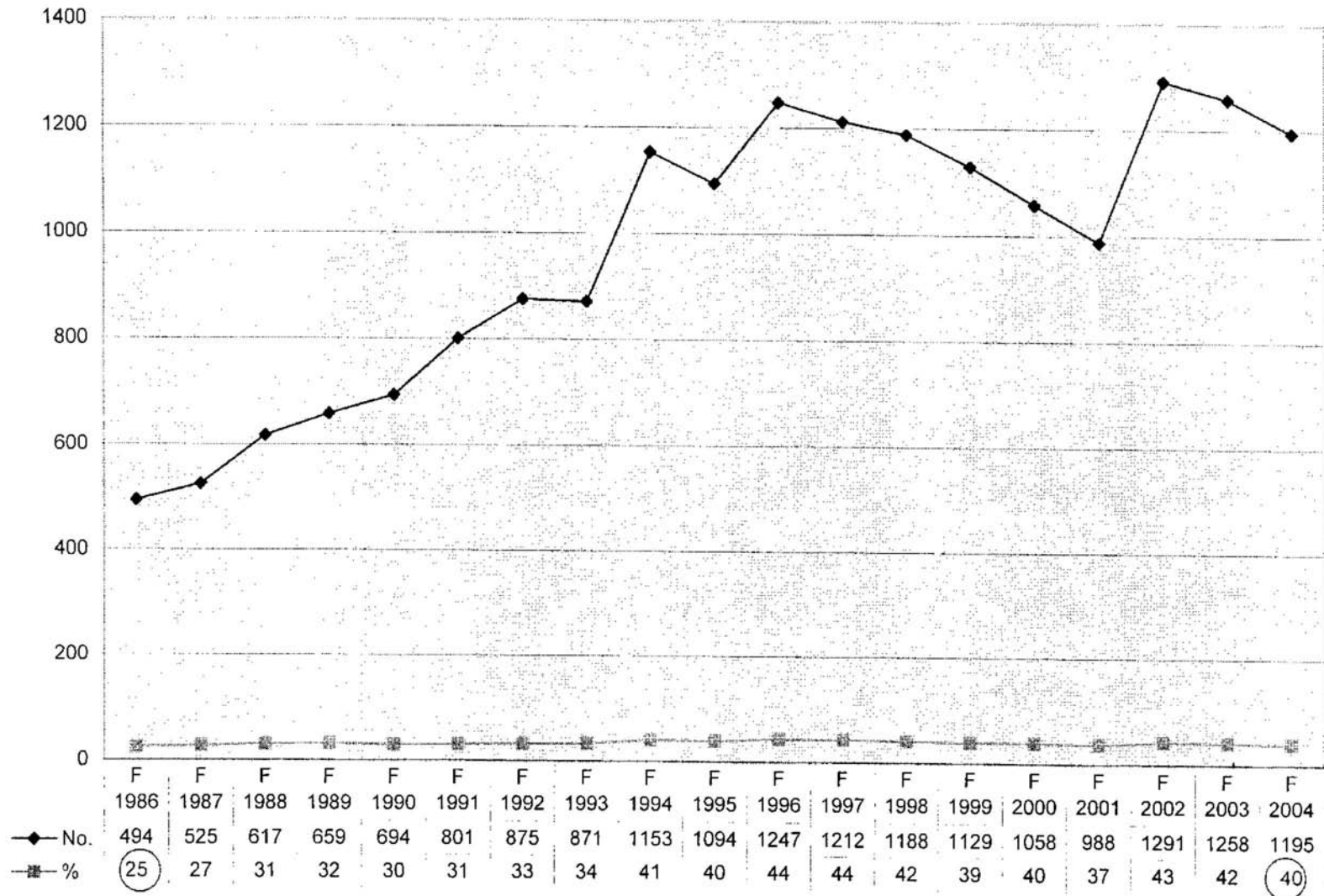
**Notes:**

Increase in LibArts and Career proportion around F1993 corresponds to a decrease in Unclassified majors. Priority registration students was implemented in F1993.

Downward blip in LibArts majors in 2001 is matched with an upward blip in Unclassified – a labeling issue?

Career students show a steady percentage decline since 1999, from 41% to 32%.

### Progression of Liberal Arts Majors



*Notes:*  
 Liberal Arts majors increased in number by about 250%, from 494 in F1986 to 1,195 in F 2004.  
 Liberal Arts headcount spiked in 1996, dropped for the next 5 years, and the following year ((2002) hit the apex at 1291.  
 Liberal Arts majors are now a larger contributor to the in the overall college headcount, from 25% to 40%.  
 Yet, at 40%, Liberal Arts majors do not constitute a majority (tech = 32%, unclassified = 21%, no data = 7%).